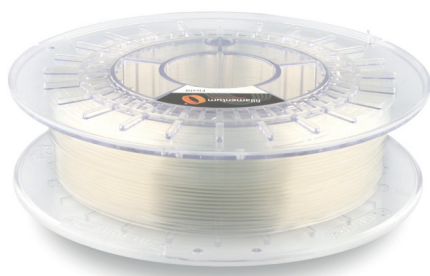


Flexfill 98A

Description:

Would you like your 3D models to stand out by their elasticity and flexibility but you could not find a suitable elastic material that would fulfill your idea? We have a solution - try printing flexible parts with Flexfill 3D printing filament by Fillamentum. And if you have a printer with two print heads you can use Flexfill to add an extra layer which will make a surface soft to touch.



| Physical properties | Typical Value | Test Method | Test Condition |
|-------------------------|--------------------------------------|-------------|----------------|
| Material density | 1,22 g/cm ³ | ISO 1183 | |
| Diameter tolerance | ± 0,01 mm | | |
| Weight | 500 g of filament (+ 250 g spool) | | |
| Mechanical properties | Typical Value | Test Method | Test Condition |
| Tensile strength | 53,7 MPa | DIN 53504 | 200 mm/min |
| Elongation at break | 318 % | DIN 53504 | |
| Tensile storage modulus | 444 MPa | ISO 6721 | 20 °C |
| Hardness | 98 ShA | ISO 868 | |
| | 60 ShD | ISO 868 | |
| Thermal properties | Typical Value | Test Method | Test Condition |
| Melting temperature | 215-235 °C | | |
| Printing properties | Typical Value | Test Method | Test Condition |
| Print temperature | 200-220 °C | | |
| Hot pad | 30-50 °C | | |
| Speed of printing | 20-30 mm/s | | |

Workability of 3D printing filament is at least 12 months from delivery.
The information was processed with the best knowledge of the manufacturer and it is for information only.